

RL2100 HE

Heavy-Capacity Weigh Modules



Picture is a representation of actual product

Incorporating an articulating load plate, hardened load pin and double-ended beam load cell into one simple design, the RL2100HE tolerates eccentric loads and side loads of up to 100% of capacity. The RL2100HE comes standard with NTEP Certified, 1:5000 division class IIIIL load cells, yielding up to 0.02% total error. An integral conduit adapter offers added washdown protection. These standard features give the RL2100HE accuracy and dependability in one heavyweight package. The simple load introduction and load cell design provides consistent accuracy in washdown applications, making the RL2100HE ideal for high-capacity hostile environments.

Standard Features

- All stainless steel construction
- Welded seal, stainless steel load cells, IP67, guaranteed waterproof
- NTEP Certified load cells, 5000d, Class IIIIL/10,000d, Class IIIIL Multiple Cell
- Bolt-in-place design; module bolts directly to tank leg without requiring additional load buttons or mounting plates
- Self-checking design with lift-off/tip-over protection
- Two-year limited warranty

Applications

- Heavy-capacity tanks, blenders, reactors and bulk inventory management
- Petroleum refining process control
- Chemical blending/batching

Complete Kit Includes

- 1 JB4SS NEMA 4X stainless steel signal-trim junction box
- 3 or 4 2100HE stainless steel compression mounts
- 3 or 4 RL75060S stainless steel, welded seal double-ended beam load cells (
- 25 ft of our Hostile Environment EL147HE SURVIVOR® load cell cable

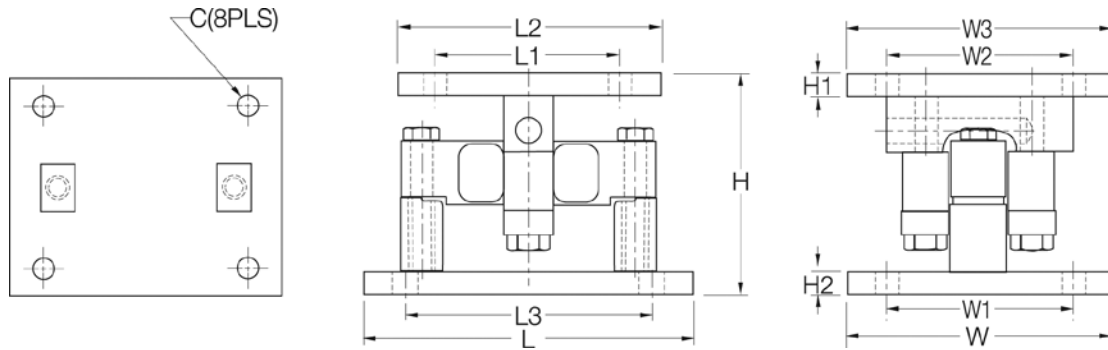
Load Cell Certifications



NOTE: Check with your local weights & measure officials for suitability in Legal for Trade applications.

RL2100 HE

Heavy-Capacity Weigh Modules



Dimensions

RATED CAPACITY	C	H	H1	H2	L	L1	L2	L3	W	W1	W2	W3
lb/inches												
20,000-25,000	.78	6.85	.75	.75	10.00	6.00	8.00	7.50	8.00	6.00	6.00	8.00
35,000-100,000	1.13	9.42	1.00	1.00	14.00	6.50	9.00	11.50	10.00	7.50	6.50	9.00
kg/mm												
9071.9-11,339.8	19.8	174.0	19.1	19.1	254.0	152.4	203.2	190.5	203.2	152.4	152.4	203.2
15,875.7-45,359.2	28.7	239.3	25.4	25.4	355.6	165.1	228.6	292.1	254.0	190.5	165.1	228.6

Order Information

LOAD RATING (PER MODULE)	PART #	PRICE
Single Module (Includes Load Cell)		
20,000 lb (9071.8 kg)	32951	Consult
25,000 lb (11,339.8 kg)	65541	Consult
35,000 lb (15,875.7 kg)	32952	Consult
50,000 lb (22,679.6 kg)	32953	Consult
60,000 lb (27,215.5 kg)	32954	Consult
75,000 lb (34,019.4 kg)	32955	Consult
100,000 lb (45,359.2 kg)	32956	Consult

Order Information

LOAD RATING (PER MODULE)	PART #	PRICE
3-Module Kit		
20,000 lb (9071.8 kg)	32970	Consult
25,000 lb (11,339.8 kg)	65984	Consult
35,000 lb (15,875.7 kg)	32969	Consult
50,000 lb (22,679.6 kg)	32968	Consult
60,000 lb (27,215.5 kg)	32967	Consult
75,000 lb (34,019.4 kg)	32966	Consult
100,000 lb (45,359.2 kg)	32965	Consult
4-Module Kit		
20,000 lb (9071.8 kg)	32964	Consult
25,000 lb (11,339.8 kg)	65983	Consult
35,000 lb (15,875.7 kg)	32963	Consult
50,000 lb (22,679.6 kg)	32962	Consult
60,000 lb (27,215.5 kg)	32961	Consult
75,000 lb (34,019.4 kg)	32960	Consult
100,000 lb (45,359.2 kg)	32959	Consult